



Bang: User Guide

Overview: Bang

- Bang is an explosive hazard modeling application for android platforms.
- Stand alone application for mil/ public safety bomb technicians.
- Open source within the EOD community under Apache 2.0 license.
- Mil version complies with 60a-1-1-4 protection of personnel and property requirements.
- Civ version (default download) uses cube root to derive blast distances.
- For access to the Mil version or for alternate mathematical models for your organisation send us an email.

Permissions:

Bang requires the following to operate:

- Fine location permissions.
- Storage permissions.
- An active google play account.

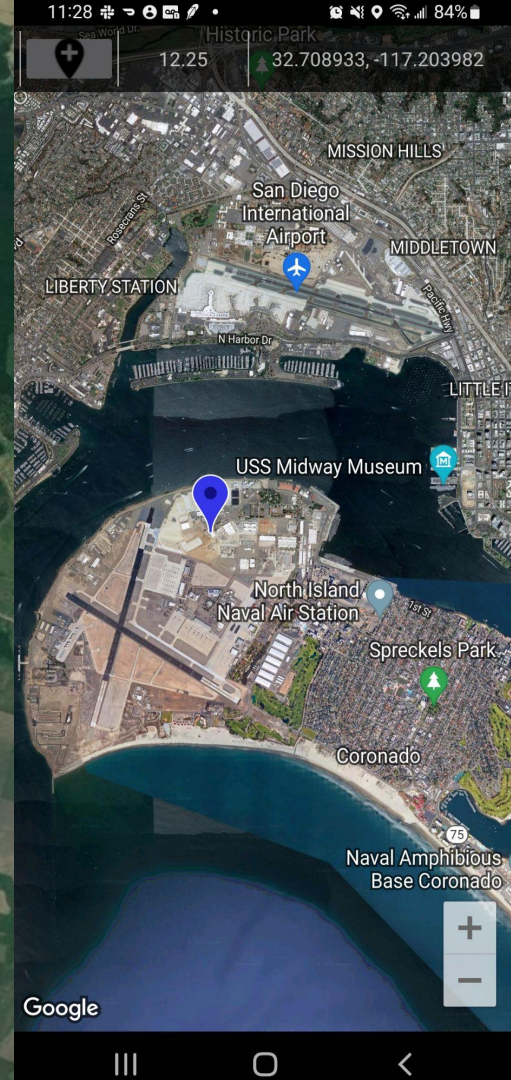
If the app crashes the first time you launch it, go into your settings-apps-permissions and grant bang the required permissions.

Maps Screen:

This is the core of the application

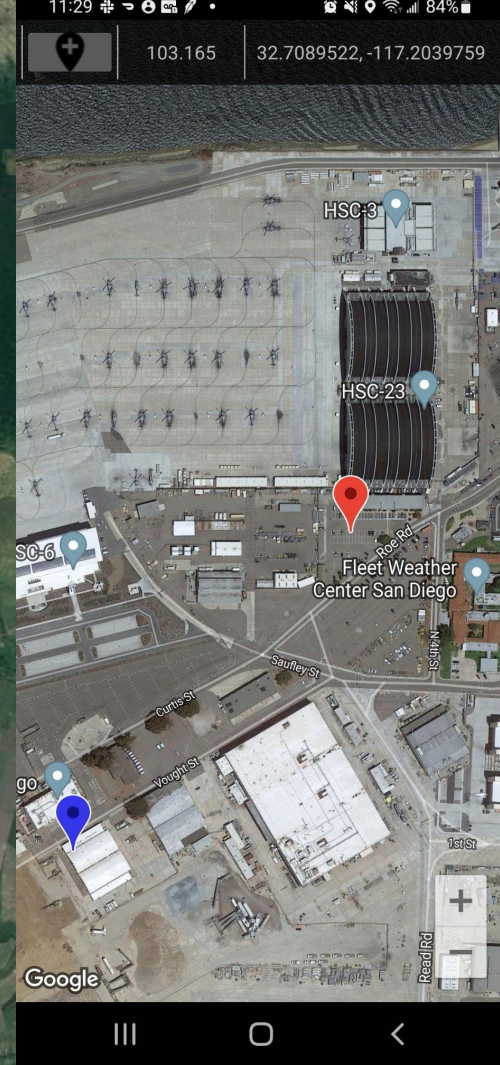
Top tool bar:

- Far left button recenters camera.
- Left number is accuracy.
- Right number is lat/lng.
- Blue marker indicates current location.



Long Click Map:

- Long clicking on the map drops an event pin that can be modified.

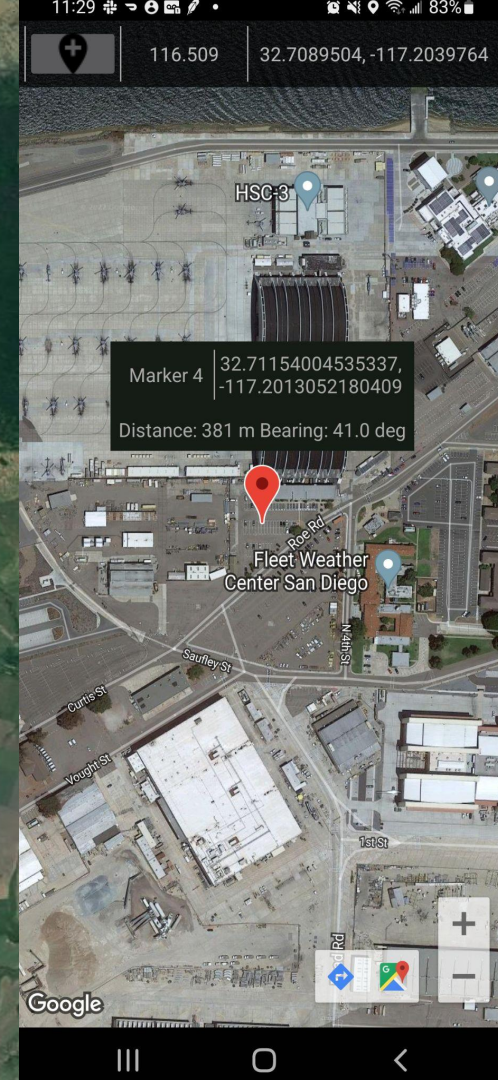


Clicking On Marker:

Clicking on the marker opens the information window

Info window provides:

- Marker name.
- Marker location.
- Distance and bearing from current position.



Clicking Info Window

Clicking on the info window launches the edit window function.

This allows you to rename your marker and add a description.

Toggles Haz Rings

Saves Changes

Launches TDA

Deletes Marker

Marker 4

32.71154004535337,
-117.20130521804094

Add a description: This can be anything you think is important about this place or event

NEW: 0.0 lbs
Red Circle: KNone
Green Circle: KNone
☐ Plot Hazard Arcs



Clicking TDA Button

Clicking on the TDA button launches the TDA function. This allows you to add an explosive event to the marker.

Explosive dropdown

List of explosive components

Robust, nonRobust, EHC spinner

Calc button launches results

Stacked?

11:30 83%

Blast Frag Calculator

Select Explosives

Unknown ,1.40

Weight Units

Quantity

Explosives List:
(1.0) Unknown ,1.40 X 32.0 lbs

Total TNT equivalent: 44.800 lbs

☐ Stacked

Clicking TDA Button

Clicking on the TDA button launches the TDA function. This allows you to add an explosive event to the marker.

Blast distances by
k-factor

Frag distances

Inner haz ring k-factor

Outer haz ring
k-factor

Sends you back to
map with haz plotted

Blast/Frag Distances:

K-Factor Table:

K014	15 meters	00050 feet
K025	27 meters	00089 feet
K050	54 meters	00178 feet
K100	108 meters	00355 feet
K328	355 meters	01165 feet
K500	541 meters	01776 feet
K625	677 meters	02220 feet

Frag Table:

Haz Frag:	179 meters	00588 feet
Max Frag:	661 meters	02167 feet

Google Earth Information

The selected K-Factor radius will be added to your GRG

Inner Hazard Area 50

Outer Hazard Area 328

PLOT TO GOOGLE EARTH

Rings On The Map:

Green/ red rings are the k-factors you selected.

Use this a tool to help you coordinate and provide visuals to partners.

Obviously...an android app doesn't replace sound decision making and threat assessment. You still need to make good decisions as an EOD technician.

ENJOY!

